

29 TRAFFIC CONTROL

Attention: Supervisors

Traffic control persons (TCPs) must be given written and oral instructions regarding their duties. This section is designed to help you meet the requirement for written instructions set out in Section 69(4) of the Construction Regulation.

A worker who is required to direct vehicular traffic,

- (a) shall be a competent worker;*
- (b) shall not perform any other work while directing vehicular traffic;*
- (c) shall be positioned in such a way that he or she is endangered as little as possible by vehicular traffic; and*
- (d) shall be given adequate written and oral instructions, in a language that he or she understands, with respect to directing vehicular traffic, and those instructions shall include a description of the signals that are to be used.*

In addition, the written instructions must be kept on the project.

What are the objectives of traffic control?

- To protect construction workers and the motoring public by regulating traffic flow.
- To stop traffic whenever required by the progress of work. Otherwise to keep traffic moving at reduced speeds to avoid tie-ups and delays.
- To allow construction to proceed safely and efficiently.
- To ensure that public traffic has priority over construction equipment.

What equipment do I need?

Personal

- Hard hat that meets regulated requirements.
- Safety boots, CSA-certified, Grade 1 (green triangular CSA patch outside, green rectangular label inside).
- Garment, usually a vest, covering upper body and meeting these requirements:
 - fluorescent or bright orange in colour
 - two vertical yellow stripes 5 cm wide on front, covering at least 500 cm²
 - two diagonal yellow stripes 5 cm wide on back, in an X pattern, covering at least 570 cm²
 - stripes retro-reflective and fluorescent
 - vests to have adjustable fit, and a side and front tear-away feature on vests made of nylon.

We recommend that garments comply with CSA standard Z96-02—and in particular a Class 2 garment, Level 1 or Level 2.

Sign

A sign used to direct traffic must be

- octagonal in shape, 450 mm wide, and mounted on a pole 1.2 m long
- made of material with at least the rigidity of plywood 6 mm thick
- high-intensity retro-reflective red on one side, with STOP printed in high-intensity retro-reflective white

- 150 mm high
- on the other side, high-intensity retro-reflective micro-prismatic fluorescent chartreuse, with a black diamond-shaped border at least 317 mm x 317 mm, with SLOW printed in black 120 mm high.

After Dark

Section 69.1(4) of the Construction Regulation requires that you wear retro-reflective silver stripes encircling each arm and leg, or equivalent side visibility-enhancing stripes with a minimum area of 50cm² per side.

The following measures are recommended:

- Wear a hard hat with reflective tape.
- Use a flashlight with a red cone attachment as well as the sign and carry spare batteries.
- Place flashing amber lights ahead of your post.
- Stand in a lighted area under temporary or street lighting, or illuminated by light from a parked vehicle (stand fully in the light without creating a silhouette).

What are the requirements of a good traffic control person?

- Sound health, good vision and hearing, mental and physical alertness.
- Mature judgment and a pleasant manner.
- A good eye for speed and distance to gauge oncoming traffic.
- Preferably a driver's licence.
- The ability to give motorists simple directions, explain hazards, and answer questions.
- Liking, understanding, and respect for the responsibilities of the job.

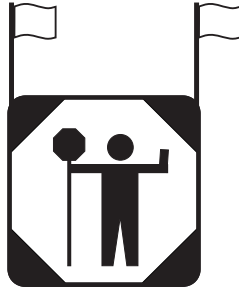
How do I prepare for each job?

Before starting work, make sure that you know

- the type of construction you will be involved with — paving, installing pipe, grading, cut and fill, etc.
- the type of equipment to be used, such as scrapers, trucks, compactors, and graders
- how the equipment will be operating — for instance, crossing the road, along the shoulder, in culverts, or on a bridge
- whether you will have to protect workers settling up components of the traffic control system such as signs, delineators, cones, and barriers
- any special conditions of the contract governing road use (for instance, many contracts forbid work during urban rush hours)
- how public traffic will flow — for example, along a two-lane highway, around curves or hills, by detour or on a road narrowed to a single lane. This last is a very common situation and requires two traffic control persons to ensure that vehicles do not move in opposing directions at the same time (see next page). In some cases, where the two cannot see one another, a third is necessary to keep both in view and relay instructions (see “Positioning of Traffic Control Persons,” next page).

What should I check each day?

- Make sure that the STOP-SLOW sign is clean, undamaged, and meets height and size requirements.
- Place the TRAFFIC CONTROL PERSON AHEAD sign at an appropriate distance to afford motorists adequate warning.
- Remove or cover all traffic control signs at quitting time or when traffic control is temporarily suspended.
- Arrange with the supervisor for meal, coffee, and toilet breaks.

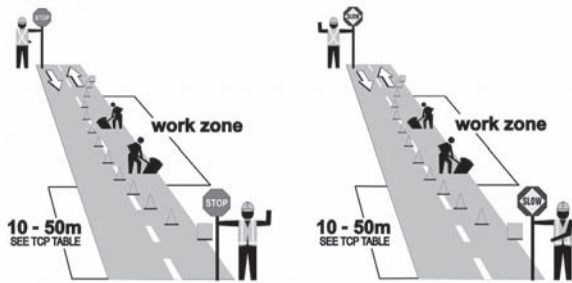


Where should I stand?

- Stand the correct distance from the work area. Refer to TCP Table on the following page.
- Do not stand on the travelled portion of roadway and always face oncoming traffic.
- Be alert at all times. Be aware of construction traffic around you and oncoming traffic on the roadway.
- Stand alone. Don't allow a group to gather around you.
- Stand at your post. Sitting is hazardous because your visibility is reduced and the ability of a motorist to see you is reduced.

TCP TABLE

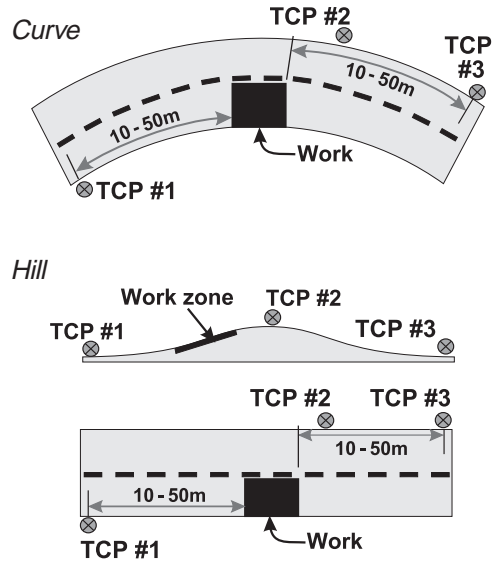
POSTED SPEED	60 km/h OR LESS, ONE LANE OR REDUCED TO ONE LANE IN EACH DIRECTION		70 km/h TO 90 km/h, ONE LANE OR REDUCED TO ONE LANE IN EACH DIRECTION	
TRAFFIC VOLUME	LOW	HIGH	LOW	HIGH
DISTANCE OF TCP FROM WORK ZONE	10 – 15 m	20 – 30 m	30 – 40 m	40 – 50 m



Typical Arrangement on Two-lane Roadway

- Adjust distances to suit road, weather and speed conditions. Remember these points:
 - Traffic must have room to react to your directions to stop (a vehicle can take at least twice the stopping distance on wet or icy roads).
 - Stand where you can see and be seen by approaching traffic for at least 150 metres (500 feet).
 - Avoid the danger of being backed over or hit by your own equipment.
- Hills and curves call for three TCPs or some other means of communication. The job of the TCP in the middle is to relay signals between the other two.

Positioning of Traffic Control Persons



Note: On curves and hills, three TCPs or some other means of communication are required.

The duty of TCP #2 is to relay signals between TCP #1 and #3.

- Once you have been assigned a traffic control position by your supervisor, look over the area for methods of escape — a place to get to in order to avoid being injured by a vehicle heading your way, if for some reason the driver has disregarded your signals. If this should happen, protect yourself by moving out of the path of the vehicle and then warn the crew.

Where am I not allowed to direct traffic?

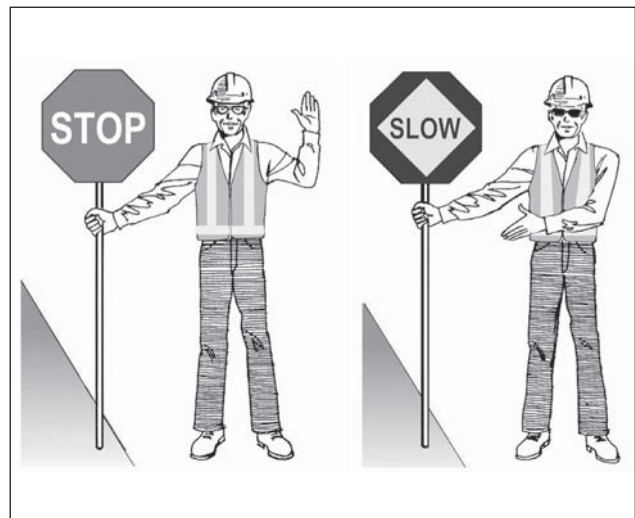
Section 69 of Ontario Regulation 213/91 specifies that:

A worker shall not direct vehicular traffic for more than one lane in the same direction. s. 69(2)

A worker shall not direct vehicular traffic if the normal posted speed limit of the public way is more than 90 kilometres per hour. s. 69(3)

How should I signal?

- Use the STOP-SLOW sign and your arms as shown below.



- Hold your sign firmly in full view of oncoming traffic.
- Give the motorist plenty of warning. Don't show the STOP sign when the motorist is too close. The average stopping distance for a vehicle travelling at 50 kilometres per hour (30 miles per hour) is 45 metres (150 feet). Higher speeds require more stopping distance.
- When showing the SLOW sign, avoid bringing traffic to a complete halt. When motorists have slowed down, signal them to keep moving slowly.
- When showing the STOP sign, use firm hand signals and indicate where you want traffic to stop. After the first few vehicles stop, move to a point on the road where traffic in the queue can see you.
- Before moving traffic from a stopped position, make sure the opposing traffic has stopped and that the last opposing vehicle has passed your post. Then turn your sign and step back on the shoulder of the road.
- Stay alert, keep your eyes on approaching traffic, make your hand signals crisp and positive.
- Coordinate your effort with nearby traffic signals to avoid unnecessary delays, tie-ups, and confusion.
- Do not use flags to control traffic.
- In some situations, two-way traffic may be allowed through the work zone at reduced speed, with a traffic control person assigned to each direction. Since motorists can be confused or misled by seeing the STOP side of the sign used in the opposite lane, the signs must be modified. The STOP side must be covered to conceal its distinctive shape and command. This should prevent drivers from stopping unexpectedly.

How can I improve safety for myself and others?

- Don't be distracted by talking to fellow workers or passing pedestrians. If you must talk to motorists, stay at your post and keep the conversation brief.
- When using two-way radios to communicate with another traffic control person, take the following precautions:
 - Establish clear voice signals for each situation and stick to them.
 - Be crisp and positive in your speech.
 - Test the units **before** starting your shift and carry spare batteries.
 - Avoid unnecessary chit-chat.
 - Don't use two-way radios in blasting zones.
- When two traffic control persons are working together, you should always be able to see each other in order to coordinate your STOP-SLOW signs. Signals between you should be understood. If you change your sign from STOP to SLOW or vice-versa, you must signal the other person by moving the sign up and down or sideways. This will ensure that traffic control is coordinated. Two-way radios are the best way of communicating.

When you can't see the other traffic control person, a third should be assigned to keep you both in view.

What are my rights under the law?

Additional requirements for traffic control are spelled out in the **Ontario Traffic Manual, Book 7: Temporary Conditions**, available through Service Ontario Publications (1-800-668-9938). Ask for item number 170076. It can also

be downloaded for free from www.mto.gov.on.ca through a library search for the Ontario Traffic Manual.

The information applies to traffic control by any persons or agencies performing construction, maintenance, or utility work on roadways in Ontario.

The Construction Regulation under the *Occupational Health and Safety Act* makes it mandatory that traffic control persons be protected from hazards. This includes not only personal protective clothing and equipment but measures and devices to guard against the dangers of vehicular traffic. Safety should receive prime consideration in planning for traffic control. Regulations under the *Occupational Health and Safety Act* are enforced by the Ministry of Labour.

Traffic control persons have no authority under the *Highway Traffic Act* and are not law enforcement officers. If problems arise, follow these steps.

- Report dangerous motorists to your supervisor.
- Keep a pad and pencil to jot down violators' licence numbers.
- Ask your supervisor for assistance from police in difficult or unusual traffic situations.
- Never restrain a motorist forcibly or take out your anger on any vehicle.
- Always be alert to emergency services. Ambulance, police, and fire vehicles have priority over all other traffic.

Remember

- Always face traffic.
- Plan an escape route.
- Wear personal protective clothing.
- Maintain proper communication with other traffic control persons.
- Stay alert at all times.
- Be courteous.

Traffic control is a demanding job, often a thankless job, but always an important job. How well you succeed will depend largely on your attitude.